



EV | VEHICLE SERVICE CONTRACT

Administered by

CNA NATIONAL[®]

4150 N. Drinkwater Blvd. Suite 400
Scottsdale, AZ 85251
(800) 345-0191

This is not a contract. Coverage provided by the manufacturer's warranty supersedes service contract. Please see service contract for obligations, conditions, limitations, exclusions and state-specific provisions that may change your coverage or benefits.

This product is not insurance. The product being offered is a service contract and is separate and distinct from any product or service warranty which may be provided by the manufacturer, importer, or seller. Service Contract Providers: Dealers, Continental Service Provider, Inc.; Continental Service Plan, Inc.; or

in Florida by CNA National Warranty Corporation-Florida, at the address shown above, Florida Company #60098.

DESIGNED TO MEET THE NEEDS OF THE EV BUYER

Experience confidence on the road with electric vehicle protection from CNA National.

STANDARD PROTECT

ELECTRIC POWER AND SENSOR COMPONENTS

Power thermal management (including processor and sensors)

Inverter and power control unit (including processor and sensors)

DC to DC converter (including processor and sensors)

E-MOTOR¹

Stator
Rotor

TRANSMISSION¹

Transmission case
Transaxle case
Transfer case and their internal parts
Cooler and metal cooler lines
Transmission mounts
Output shaft seal
All transfer case seals

POWERTRAIN ELECTRONICS

Cooling fan control processor and sensors

Electronically controlled transmission—transmission shift control processor and sensors

DRIVETRAIN ASSEMBLY

Final drive and axle housing(s) and their internal parts

Axle shafts and bearings

Universal and constant velocity joints

Drive shaft(s)

Center bearings and drive shaft yokes

Four-wheel-drive engagement actuator/motor

Traction control linkage

Solenoids

Control processor and sensors

Differential gasket(s)

Pinion seal

Axle seal(s) or gasket(s)

CV joint boots

FRONT-WHEEL STEERING

Steering gear housing
Rack assembly

Steering column shaft and its couplings and bearings

Pitman arm

Idler arm

Tie rods

Steering linkages

PREMIER PROTECT

INCLUDES ALL PREVIOUSLY LISTED PARTS, PLUS:

ELECTRIC POWER AND SENSOR COMPONENTS

Battery management system (including processor and sensors)

Charging port (including the housing)

Onboard charger (including processor and sensors)

High-voltage power cables

INTERIOR ELECTRONICS

Electronic climate control head

Digital dash display

Heads-up display projector and control unit

Trip/mileage function computer

Cruise control assembly

Entertainment chassis including radio ²

Audio/video player/screen and integrated navigation system ²

CONVENIENCE ACCESSORIES

Power window motor
Window regulator

Power seat motor

Power door lock motor and its relays and actuator

Power mirror motors

Power headlamp motor

Power trunk or tailgate motor and solenoids

Power top or sunroof motor

Convertible top frame

Power antenna motor

Heated seat elements

Horn and horn relay

Rear window defogger/defroster

Memory seat and steering wheel

Activator switches, motors, solenoids, control processor and sensors

SUSPENSION

Electronic suspension/variable suspension struts and shocks, switches, air tubes, control processor and sensors

Air suspension bags, compressor, lines and fittings

Upper and lower control arms and their shafts and bushings

Ball joints

Steering knuckles and spindles

Stabilizer and strut or track bars and their bushings and links

Coil springs

Torsion bars and their mounts

Leaf springs and their shackles and bushings

Hub bearings or wheel bearings

Hub or wheel bearing seals

Shocks and struts

STEERING

Gear housing or rack assembly and their internal parts

Power cylinder

Center shaft

Stepper motor

Control processor and sensors

ELECTRICAL

Wiring harnesses

Wiper motors

Manually operated switches

Neutral safety switch

Backup light switch

Brake light switch

ABS BRAKES

ABS booster/pump

Master cylinder, solenoids, control processor and sensors

EV HARDWARE

Bumper impact absorbers

Headlamp mounting buckets

Parking and side lamp bodies and sockets

Hood latch and cables

Hood hinges and springs

Side door hinges

Side door handles

Glove box lock assembly

Manual seat track assembly

Courtesy light switches

Trunk lid hinges and torsion bars

Trunk lid striker plate

BRAKES

Master cylinder

Wheel cylinders

Calipers and their seals

Power booster

Accumulator

Combination valve

Backing plate assembly

Metal brake lines and fittings

Brake pedal

Parking brake assemblies

AIR CONDITIONING & HEATING

Air conditioning compressor, clutch and coil

Pulley

Compressor mounting bracket

Condenser

Evaporator

Accumulator

Receiver-dryer

Expansion valve

Orifice tube

Heater core

Heater control valve

Blower motor

Control cables

Ducts

Plenum doors

Compressor seals and gaskets

Line o-rings

ELITE PROTECT

Elite Protect is so comprehensive, it's easier to tell you which parts aren't covered:

Propulsion battery

Antenna mast and mirrors

Audio speakers and wiring

Starting, Lighting, Ignition ("SLI") batteries, and any associated components

Fuses and fusible links

Body, body panels, body fasteners, chassis frame, and bumpers

Brake drums, rotors, pads, and linings

Bright metal, trim, upholstery, carpet, insulation, and paint

Convertible top

Filters and filter housings

Glass including fogged or hazy headlight lenses

Jack and tool kit, wheel lugs, and lug nuts

Tires, wheels, and wheel covers

Windshield wiper rubber inserts

Charger(s), charger adapter(s), and charging cable(s) (including but not limited to wall and portable chargers)

All future connectors

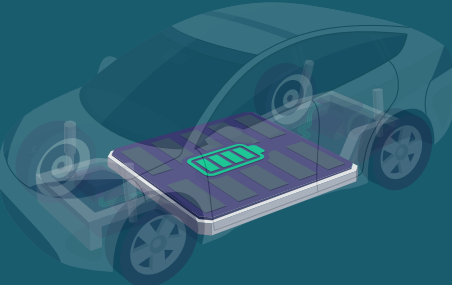
After-market software, modifications, and EV kits

Autonomous driving system

ELITE PROTECT with Battery

Elite Protect with Battery provides the same exceptional coverage as our Elite Protect coverage, but includes protection for the propulsion battery!³

The propulsion battery will be repaired or replaced when it retains less than the original equipment manufacturer's capacity allowance.



Please refer to the service contract for complete terms and conditions. ¹These parts covered if the vehicle service contract term exceeds the powertrain warranty term. ²Only when factory-installed or dealer-installed. ³The battery must be the original battery installed by the original equipment manufacturer.

Valuable features of your EV coverage



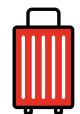
Roadside assistance

Simply call our toll-free number 24 hours a day, seven days a week for our sign-and-drive service, offering up to \$50 per occurrence for flat tire and lock-out assistance or up to \$150 per occurrence for flat-bed towing. Or, you can call your own provider for flat-tire, lock-out or flat-bed towing assistance, and we will reimburse you up to these dollar limits.



Rental car reimbursement

We will pay up to \$50 per day with a maximum of \$350 total for a rental vehicle when a covered breakdown occurs.



Travel and lodging reimbursement

We will reimburse you for meals and lodging up to \$100 per day with a maximum of \$300 per occurrence if you are stranded more than 100 miles from home due to a covered breakdown.



Limp along assistance

We will pay up to \$100 per occurrence to deliver a mobile charge for your electric vehicle in the event your propulsion battery is depleted while on the road, subject to availability as outlined in your service contract.



Repair locations across the U.S. and Canada

Your dealership is generally your best option for repair service needs. However, you'll rest easy knowing that your coverage will be honored at thousands of locations throughout the United States and Canada.



Future contract guarantee

You may be able to purchase a new service contract when your current agreement expires, subject to eligibility requirements outlined in your service contract.

Frequently Asked Questions

Q: What does a vehicle service contract offer that a factory warranty doesn't?

A: In the event of a mechanical breakdown, a vehicle service contract or VSC can help reduce costs to repair or replace components that are not covered by the manufacturer's warranty. Our program also provides additional valuable benefits such as flat-bed towing, rental car, limp along coverage and emergency roadside assistance for covered breakdowns. The coverage continues until the expiration date of the service contract or when the expiration odometer mileage is reached, whichever occurs first.

Q: Can a vehicle service contract save me money?

A: The new and advanced technology in electric vehicles has increased the complexity of even basic repairs. As a result, repair and labor costs are likely to continue going up. The price of just one significant repair could exceed the cost of purchasing a service contract today.

Q: Can the purchase price be included in my monthly vehicle payment?

A: Yes, the cost of this coverage can usually be added to your monthly payment, but it can only be done when you purchase your vehicle. If you are financing your vehicle, ask your dealer for details.

Q: What if I decide to sell my vehicle before the coverage expires?

A: You may be able to transfer any remaining coverage to the next owner. The added value of a service contract may make it easier to sell your vehicle and could help you get a higher resale price. Transfers are limited to individual purchasers and are not eligible if the vehicle is traded-in or sold to a business.

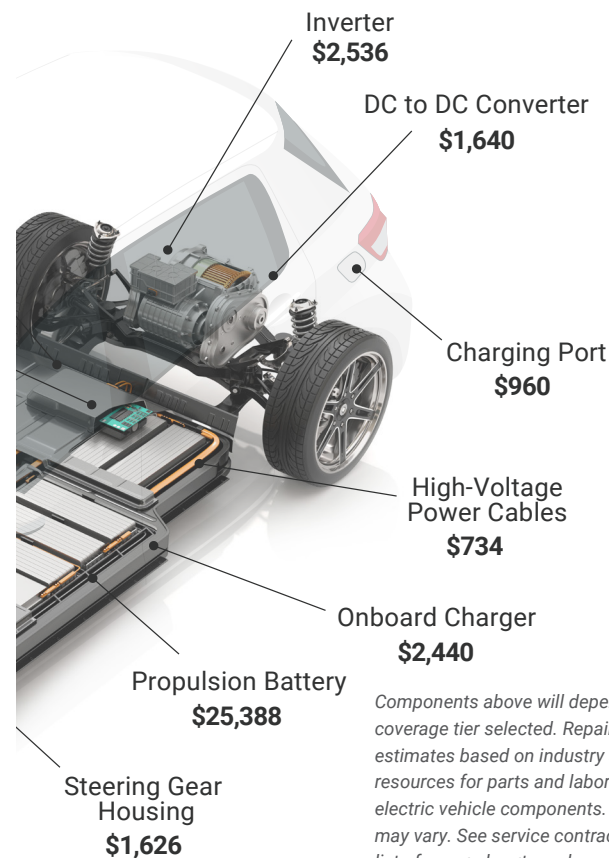
Q: Can I renew my coverage?

A: You may be able to purchase a new service contract when your current agreement expires, subject to eligibility requirements outlined in your service contract.



The smart choice to help reduce out-of-pocket expenses

Our coverage can help protect your future finances from these potentially high and unexpected expenses.



Components above will depend on coverage tier selected. Repair cost estimates based on industry standard resources for parts and labor pricing on electric vehicle components. Actual costs may vary. See service contract for full list of covered parts and components; additional terms and conditions may apply.



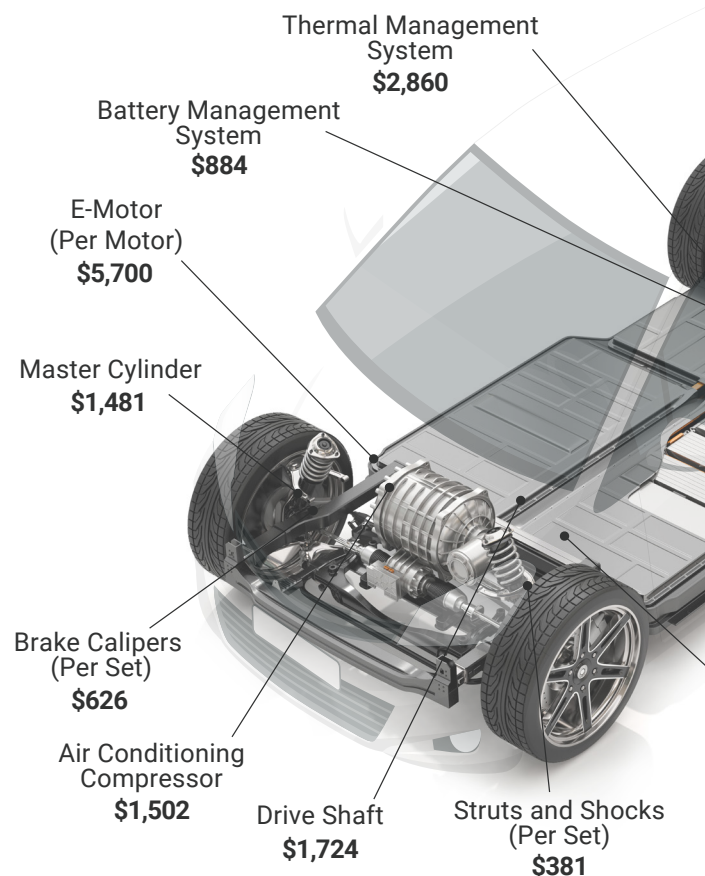
Drive with confidence on the road ahead

With the advanced technology in today's vehicles, the cost of repairs may increase every year. Even one mechanical breakdown could leave you with a repair bill for thousands of dollars. Our expertise and coverage can help reduce these potentially high out-of-pocket expenses.

With our service contract, you can be confident knowing that your coverage is valid throughout the United States and Canada. You can even choose from different lengths and types of coverage that best fit your driving habits and match your specific needs. Hopefully, you'll never have a breakdown, but driving with a service contract can help reassure you while on the road.



Potential repair cost estimates



Q: What should I do if my vehicle breaks down?

A: If possible, return to the dealership (or choose any licensed repair facility in the U.S. or Canada) to determine the problem and cause of the breakdown—and, if needed, make sure to take advantage of your plan's towing benefit. Have the repair facility call our toll-free number before beginning any repairs. You only pay for your deductible and any costs not covered by your service contract.

Q: Where can I take my vehicle for repairs if I'm far from home?

A: Your vehicle service contract will be accepted at thousands of licensed repair facilities throughout the U.S. and Canada. If you have a breakdown far from home, your towing benefit can help get you to a nearby repair facility. You will also be reimbursed for lodging, meals, and rental car up to the dollar limits listed in your service contract when a breakdown occurs more than 100 miles from home and your vehicle is in the shop for covered repairs.

Q: What if I use my vehicle for commercial purposes, such as rideshare?

A: Using a vehicle for hire to the public or to transport people for hire does not void your coverage, provided that the vehicle meets the criteria listed in the service contract.